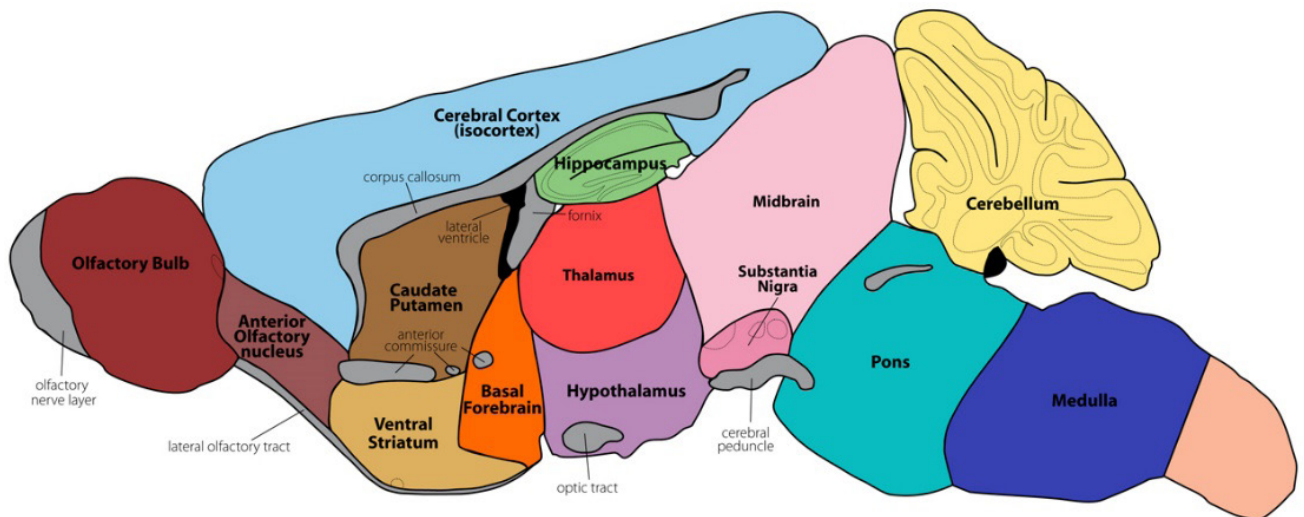


Supplementary Material

ETV5 is a Putative Differentially Expressed Transcription Factor of Interleukin 1 β Under Neuroinflammatory Conditions in Murine Cerebellum

Abeedha Tu-Allah Khan and Abdul Rauf Shakoori*

School of Biological Sciences, University of the Punjab, Quaid-e-Azam Campus, Lahore 54590, Pakistan




Supplementary Fig. S1. The regional map of murine brain with individual regions depicted by different colors.

* Corresponding author: arshakoori.sbs@pu.edu.pk,
arshaksbs@yahoo.com
0030-9923/2023/0005-2033 \$ 9.00/0



Copyright 2023 by the authors. Licensee Zoological Society of Pakistan.

This article is an open access  article distributed under the terms and conditions of the Creative Commons Attribution (CC BY) license (<https://creativecommons.org/licenses/by/4.0/>).

Supplementary Table SI. Analysis and sorting of IL-1B specific TFs according to human tissues in which they are showing highest and lowest mRNA expression under normal physiological conditions, respectively (Fagerberg et al., 2014).

TFs	highest expression in tissue	mean RPKM	Lowest expression in tissue	mean RPKM
ZNF24	thyroid	21.987	Pancreas	3.241
MLX	duodenum	29.528	Pancreas	6.156
POLR2A	testis	59.458	Pancreas	4.43
NR2F1	placenta	21.693	Bone marrow	
NR2F6	colon	27.834	Bone marrow	0.589
MYC	gall bladder	49.555	Heart	3.806
L3MBTL2	testis, lymph node, brain	7.903, 7.923, 7.856	Pancreas	1.047
MAX	spleen	18.591	Pancreas	1.893
ELF3	colon	88.575	Brain, bone marrow, spleen	
SP1	skin	18.165	Pancreas	2.401
MAFK	placenta	18.466	Salivary gland	3.55
ZNF687	bone marrow	9.101	Liver	1.368
PPARG	fat	44.739	Bone marrow, skin	
SP5	endometrium	1.509	Bone marrow, thyroid	
GATAD2A	testis	18.148	Pancreas	2.297
ZNF7	testis	4.311	Pancreas	0.643
RXRB	thyroid, spleen, brain	13.257, 12.874, 11.986	Pancreas	2.502
ZNF316	spleen	6.936	Pancreas	0.79
IRF2	spleen, lymph node	28.294, 28.152	Pancreas	1.757
SOX13	placenta	12.745	Bone marrow	0.172
ZNF766	testis	7.036	Pancreas	0.432
EP300	bone marrow	27.307	Pancreas	2.477
SAP130	testis	33.831	Pancreas	0.909
YY1	thyroid	24.857	Pancreas	3.093
TEAD1	fat	17.613	Bone marrow	
NBN	appendix	14.75	Pancreas	1.848
NR2F2	ovary	74.042	Bone marrow	
NFIC	fat	22.715	Lymph node	2.175
CEBPG	thyroid	20.404	Ovary	2.232
RAD21	lymph node, bone marrow	64.219, 65.135	Pancreas	5.444
IKZF5	bone marrow	13.41	Pancreas	1.38
FEZF1	only in testis	1.238	All other	N/A
NFIA	fat	9.178	Pancreas	0.854
ARID4B	testis	12.072	Pancreas	1.41
RXRA	skin	34.154	Pancreas	2.677
KLF16	brain	6.736	Thyroid	0.503
DMAP1	adrenal	14.734	Pancreas	2.161
HMG0A	spleen	12.997	Pancreas	1.07
ERF	kidney	13.95	Pancreas	1.87
ETV5	brain	25.68	Bone marrow	0.369

Supplementary Table SII. Interacting partners of Etv5 of *Mus musculus* and *Homo sapiens*, arranged according to the database from which they have been predicted i.e., STRING, BioGRID, IntAct and DIP (Database of Interacting Proteins).

STRING	BioGRID	IntAct (<i>id:Q9CXC9</i>)	DIP (<i>DIP 60467N</i>)
Etv5 interacting partners in <i>Mus musculus</i>			
RFWD2/COP1, DET1, GDNF, BCL6B, DUSP6, STK40, RET, TMPRSS2, SHH, SPRY2	RFWD2	COP1	RFWD2
Etv5 interacting partners in <i>Homo sapiens</i>			
JUN, CCR5, IL18R1, IFNG, ROCK2, STAT4, ROCK1, DET1, RFWD2, STK40	RFWD2, DET1, UBE2E3, STK40, AR, MFHAS1, GRAP2, TRIM25, MYH14, NXF1, MOV10, CYP3A5, CCR5, CISH, AMH, SLC22A2, SEZ6L2, DHRS7, HDAC11, APP, BRCA1, ELAVL1, CSK	*GRAP2, COP1, LRRK2, MFHAS1, SLC22A2, AMH, CYP3A5, HOXD9, CCR5, SEZ6L2, CISH, DHRS7, DET1, STK40, UBE2E3, HDAC11	

*IntAct (IntAct, 20 binary interactions found for search term ETV5).