

Supplementary Material



Human Cytomegalovirus Tegument Protein pUL23 Interacts with Capsid Protein pUL85

Shaoling Lin^{1,2} and Jiamiao Hu^{1,3*}

¹Department of Biotechnology, Jinan University, 510632, Guangzhou, P.R China; ²Faculty of Science, The Chinese University of Hong Kong, Hong Kong SAR, P.R China; ³Warwick Medical School, University of Warwick, CV2 2DX, Coventry, United Kingdom.

Editor | Muhammad Munir, The Pirbright Institute, UK.

Received | August 01, 2016; **Accepted** | September 10, 2016; **Published** | October 02, 2016

***Correspondence** | Jiamiao Hu, Department of Biotechnology, Jinan University, 510632, Guangzhou, P.R China; **Email:** Jiamiao_hu@163.com

DOI | <http://dx.doi.org/10.17582/journal.bjv/2016.3.5.133.139>

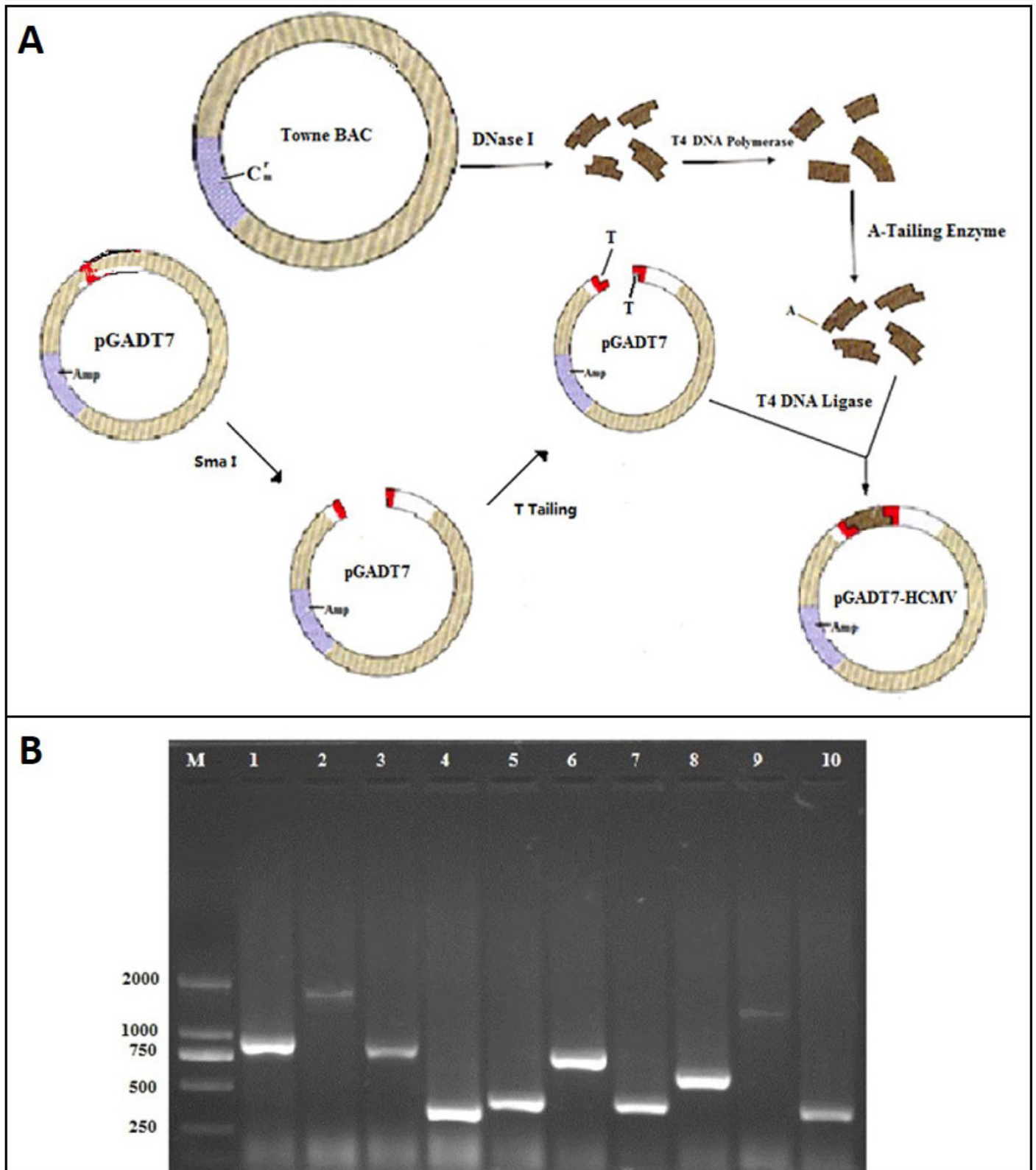
Citation | Lin, S., and J. Hu. 2016. Human cytomegalovirus tegument protein pUL23 interacts with capsid protein pUL85. *British Journal of Virology*, 3(5): 133-139.

Keywords: Human cytomegalovirus, pUL23, pUL85, Protein-protein interaction, Capsid

Supplementary Table S1: Primers for cloning and sequencing

	Sequence (5'-3')
Primers for cloning UL23 gene	
UL23_Forward_EcoRI	CCG <i>GAATTC</i> CGTCGACATGTCGGTAATCAAGGACTGTTTTCTC
UL23_Reverse_XhoI	ATACTCGAGTCACGCGTCGTCAAAAAGTTGGTGGTC
UL23_Reverse_Flag_XhoI	ATACTCGAGTCACTTATCGTCGTCATCCTTGTAATCCGCGTCGTCAAAAA-GTTGGTGGTC
Primers for cloning UL85 gene	
UL85_Forward_EcoRI	CG <i>GAATTC</i> GCCACCATGGCGGCCATGGAG
UL85_Reverse_XhoI	CCGCTCGAGTCAGCCTTTAAATATGCAGGTCCG
UL85_Reverse_HA_XhoI	CCGCTCGAGTCAAGCGTAATCTGGAACATCGTATGGGTAGCCTTTAAATATG-CAGG
UL85_N_Reverse_XhoI	CCGCTCGAGCAGCACGCATAGCGCGTC
UL85_M_Forward_EcoRI	CG <i>GAATTC</i> ATGAAGGGCGACGCGCTATGC
UL85_M_Reverse_XhoI	CCGCTCGAGGAGGCAGGCGGTCTTCATGT
UL85_C_Forward_EcoRI	CG <i>GAATTC</i> ATGGACATGAAGACCGCCTGCCTC
Primers for cloning UL46 gene	
UL46_Forward_EcoRI	CGGGTACCTCTACCGTGCCTCGCC
UL46_Reverse_Myc_XhoI	CGCGGATCCAGGTCTTCTTCAGAGATCAGTTTCTGTTTCGACGAAT-TCTCGAAAGTCTCCCA

Restriction enzyme sites used for cloning are marked as *Italic*, Expression tag or "ATG" initiation codon are marked as underline.



Supplementary Figure S1: Construction of HCMV genomic library.

A) Flowchart of the construction of HCMV genomic library; **B)** PCR analysis the inserts sizes of HCMV library. DNA marker (M), PCR amplification of inserted fragments from 10 random recombinant plasmids (1-10)