

## Research Article



# Anti-Parasite Activity of Different Plant Leaf Extracts against Infective Stage Theront of *Ichthyophthirius multifiliis*

CHIKA BRIGHT IKELE<sup>1\*</sup>, UGWU VENITA UJU<sup>1</sup>, CHIOMA FAITH IKELE<sup>2</sup>

<sup>1</sup>Department of Zoology and Environmental Biology, University of Nigeria, Nsukka; <sup>2</sup>Department of Plant Science and Biotechnology, University of Nigeria, Nsukka.

**Abstract** | *Ichthyophthirius multifiliis* is a ciliate protozoa, that persists in freshwater fish, which affects aquaculture production. Its' control has adopted chemotherapeutics, and currently environmental friendly botanicals utilized against infective stage theronts. Two solvents, ethanol and chloroform solvents were used to extract five botanicals i.e., bitter kola (*Garcinia kola*), cashew leaf (*Anacardium occidentale*), bitter leaf (*Vernonia amygdalina*), lemon grass (*Cymbopogon citratus*) and ocimum leaf (*Ocimum gratissimum*) to investigate their efficacy against theronts for 24 hours. A 100  $\mu$ l (480 theronts) were distributed into five groups; 0, 0.01, 0.03, 0.05 and 0.1 g/ml (A-E) (for all plant extracts used) in a 96 micro-wells chambers, with 3 sub-replicates of approximately 160 theronts. Mortality occurred in all groups except in the control group during the exposure period. 24-h theront mortality was highest in bitter leaf extracts and least in cashew leaf extract. Mortality was also dependent on extract concentration and extraction solvent. The two highest mortalities of 54.2% and 53.1% occurred at 0.1 g/ml ethanol and chloroform extracts of bitter leaf, respectively on 24-h exposure duration. The likelihood of a significant effect of duration of exposure on infective theront mortality resulting from the extracts was significant (Likelihood ratio [LR]  $\chi^2 = 973.95$ ,  $p < 0.0001$ ). The lethal concentration (LC<sub>50</sub>) estimates of bitter leaf ethanol and chloroform extracts were 0.137 g/ml (0.006 – 3.434) and 0.157 (0.004 – 6.099), respectively while the 95% confidence interval of the estimate overlapped with LC<sub>50</sub> estimates of the other four extracts.

**Keywords** | Theronts, *Ichthyophthirius multifiliis*, Botanicals, Mortality, Aquaculture

**Received** | April 26, 2022; **Accepted** | March 15, 2023; **Published** | May 10, 2024

**\*Correspondence** | Chika Bright Ikele, Department of Zoology and Environmental Biology, University of Nigeria, Nsukka; **Email:** chika.ikele@unn.edu.ng

**Citation** | Ikele CB, Uju UV, Ikele CF (2024). Anti-parasite activity of different plant leaf extracts against infective stage theront of *Ichthyophthirius multifiliis*. J. Anim. Health Prod. 12(2): 196-204.

**DOI** | <http://dx.doi.org/10.17582/journal.jahp/2024/12.2.196.204>

**ISSN** | 2308-2801



**Copyright:** 2024 by the authors. Licensee ResearchersLinks Ltd, England, UK.

This article is an open access article distributed under the terms and conditions of the Creative Commons Attribution (CC BY) license (<https://creativecommons.org/licenses/by/4.0/>).

## INTRODUCTION

Global food production has grown to 47% due to significant growth in aquaculture. Nigeria remains the most populous country in sub-Saharan Africa (approximately 200 million people); a staple food product such as fish has served as house hold diet in the recent times (FAO, 2017). The overall fish production in Nigeria per annum is approximately one million tons, of which 313,281 metric tons and 759,828 metric tons were from aquaculture and fisheries, respectively. With this, Nigeria ranks amongst the largest producers of fish in Africa, second to Egypt (FAO, 2017).

However, outbreaks of parasitic infections especially by an ectoparasite, and a single-celled organism, *Ichthyophthirius multifiliis* have also increased in aquaculture, causing serious economic losses. Nearly all the freshwater fish species are prone to infestation by these common ectoparasitic protozoa. It has been observed that the adult parasite (trophont) is protected by penetration in the host epithelium, current treatment plan target only the free swimming stages. Considering the life cycle of *I. multifiliis*, it is pertinent to know that infective theronts must be eliminated; having observed its' transient and shortened life span (48 h) nature in the absence of a viable host, fish. In the time past, fish farmers have adopted conventional chemotherapeutic

treatments such as; tannic acid (Alavian et al., 2018), acetic acid (Balta et al., 2008), ornidazole (Toksen and Nemli, 2010), metronidazole (Noga, 2010), potassium permanganate (Tieman and Godwin, 2001; Straus and Griffin, 2002; Balta et al., 2008; Noga, 2010), and sodium chloride (Shin et al., 2005) to control *I. multifiliis*. But the accumulation of chemical residues mostly persists in the body and tissues of the fish after treatment, thereby making the fish unacceptable to the consumers for consumption (Lusiastuti et al., 2017). To make up with these challenges, botanicals like *Moringa oleifera* (Ikele et al., 2020), *Polygonum cuspidatum* (Zhou et al., 2018), *Morus alba* root bark (Yao et al., 2010), *Cynachum paniculatum* (Ji-Hong et al., 2017), *Magnolia officinalis* (Yi et al., 2012), and *Sophora allopecuroides* (Yi et al., 2012) have been adopted as an environmental friendly, cheap, biodegradable residual-free alternative to chemicals against theronts.

Therefore, current study tested various cheap, residual-free indigenous plants to ascertain their potency in the controlling/eliminating the free swimming stage, infective theronts of *I. multifiliis*.

## MATERIALS AND METHODS

### PLANT MATERIALS

Five kilograms of fresh leaves of *Ocimum gratissimum* (Ocimum leaf), *Anacardium occidentale* (Cashew leaf), *Garcinia kola* (Bitter kola), *Cymbopogon citratus* (lemon grass), and *Vernonia amygdalina* (bitter leaf) were collected from a nearby farm, in the University of Nigeria, Nsukka and were identified in the laboratory of the Department of Plant Science and Biotechnology, University of Nigeria, Nsukka. The fresh leaves were removed from the stalk, washed to remove debris and dust particles without squeezing. The leaves of the plants were dried under room temperature for two weeks and ground into fine powder, using a commercial blender and weighed, concentrated in both ethanol and chloroform, shaken vigorously and left for 24 hours. All the mixtures were filtered independently using a muslin cloth and evaporated to dryness. The percentage yields were obtained from the different plant extracts and calculated by dividing the weight of concentrated extract with the weight of dried-ground leaves, multiplied by 100. The extractants were stored in an airtight container until ready for use.

### PHYTOCHEMICALS

Phytonutrients such as alkaloids, flavonoids, saponins, tannins, terpenoids, and glycosides (Table 1) were analysed following the method described by Ajuru et al. (2017).

### EXPERIMENTAL FISH AND PARASITE ISOLATION

Thirty (30) Ich infected juvenile *Clarias gariepinus* of aver-

age weight  $97.24 \pm 13.26$ g and standard length  $13.2 \pm 0.87$  cm was obtained from Freedom fisheries, Nsukka, Enugu State, Nigeria. They were acclimatized and, fed twice daily at 5% body weight with commercial fish pellet feed and fecal matters were daily removed. The native strain parasite source infected *Clarias gariepinus* identified by the presence of visible white spots, and mature trophonts. The infected fish was anaesthetized with 150 g/ml tricaine methanesulfonate (MS-222, Sigma) and the skins gently scraped to dislodge the trophonts. Isolated parasites were transferred into beakers containing 500ml of dechlorinated tap water in order to remove organic matter for 4 h and were incubated in the dark chamber (slight modification) to allow for mitotic division which finally produced free swimming theronts (Figure 1) within 48 h. The 100  $\mu$ l (480 theronts) were further distributed into five groups; 0, 0.01, 0.03, 0.05 and 0.1 g/ml (A-E) (for all plant extracts used) in a 96 micro-wells chambers, with a sub-replicates (3) of approximately 160 theronts were prepared for mortality test which lasted for 24 hours. Theront mortality (Figure 2) was observed and counted using olympus binocular microscope using 40X lens.

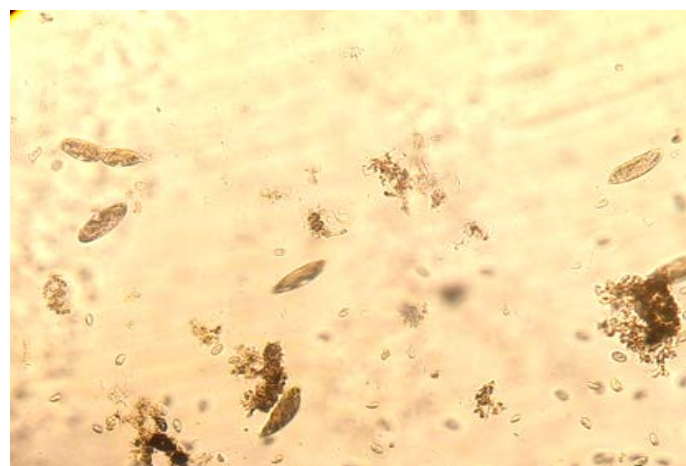


Figure 1: Free swimming theronts after 48 hours of culture

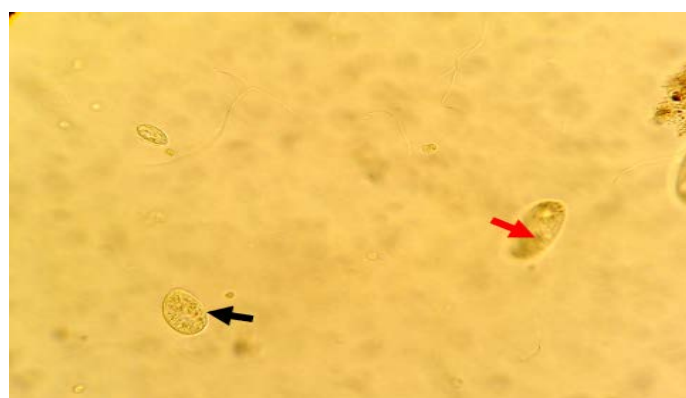


Figure 2: Microscopic representation of live (black arrow) showing fusiform to pyriform shape and intact cilia and dead theronts (red arrow) showing rounded body and deformed cilia after exposure to different botanicals for 24 hours.

**Table 1:** Qualitative phytonutrient of plant materials

| Botanicals | Cashew Ethanol leaf extract | Ocimum ethanol leaf extract | Bitter kola ethanol Leaf extract | Lemon grass ethanol leaf extract | Bitter leaf ethanol leaf extract | Cashew Chloroform leaf extract | Ocimum Chloroform leaf extract | Bitter kola Chloroform Leaf extract | Lemon grass Chloroform leaf extract | Bitter leaf Chloroform extract |
|------------|-----------------------------|-----------------------------|----------------------------------|----------------------------------|----------------------------------|--------------------------------|--------------------------------|-------------------------------------|-------------------------------------|--------------------------------|
| Alkaloid   | +                           | ++                          | ++                               | +                                | +                                | +                              | +                              | ++                                  | ++                                  | +                              |
| Flavonoid  | +                           | +                           | ++                               | ++++                             | +                                | -                              | +                              | +                                   | -                                   | +                              |
| Saponin    | +                           | ++                          | +                                | +                                | +                                | ++                             | +                              | -                                   | -                                   | -                              |
| Tannin     | +++                         | +                           | +++                              | +                                | +                                | -                              | -                              | +                                   | ++                                  | +                              |
| Terpenoid  | +                           | +                           | +                                | +                                | +++                              | -                              | +                              | +                                   | -                                   | -                              |
| Glycosides | +                           | -                           | +                                | -                                | +                                | +                              | +                              | ++                                  | +                                   | +                              |

**Table 2:** Cumulative mortality of *Ichthyophthirius multifiliis* theront on exposure to different extracts (initial theront load, 100 µL ~ 480 theront).

| Extract                                    | Solvent    | Conc. (g/ml) | Mortality (%) at exposure duration (h) |          |            |            |
|--|------------|--------------|--|----------|------------|------------|
|  |            |              | 0 h                                    | 6 h      | 12 h       | 24 h       |
| Bitter leaf ( <i>Vernonia amygdalina</i> ) | Ethanol    | 0.0          | 0 (0)                                  | 0 (0)    | 0 (0)      | 0 (0)      |
|  |            | 0.01         | 0 (0)                                  | 0 (0)    | 45 (9.4)   | 153 (31.9) |
|  |            | 0.03         | 0 (0)                                  | 11 (2.3) | 83 (17.3)  | 153 (31.9) |
|  |            | 0.05         | 0 (0)                                  | 0 (0)    | 24 (5.0)   | 160 (33.3) |
|  |            | 0.1          | 0 (0)                                  | 7 (1.5)  | 49 (10.2)  | 260 (54.2) |
|  | Chloroform | 0.0          | 0 (0)                                  | 0 (0)    | 0 (0)      | 0 (0)      |
|  |            | 0.01         | 0 (0)                                  | 0 (0)    | 21 (4.4)   | 153 (31.9) |
|  |            | 0.03         | 0 (0)                                  | 0 (0)    | 17 (3.5)   | 109 (22.7) |
|  |            | 0.05         | 0 (0)                                  | 0 (0)    | 15 (3.1)   | 164 (34.2) |
|  |            | 0.1          | 0 (0)                                  | 0 (0)    | 145 (30.2) | 255 (53.1) |
| Lemon grass ( <i>Cymbopogon citratus</i> ) | Ethanol    | 0.0          | 0 (0)                                  | 0 (0)    | 0 (0)      | 0 (0)      |
|  |            | 0.01         | 0 (0)                                  | 0 (0)    | 0 (0)      | 35 (7.3)   |
|  |            | 0.03         | 0 (0)                                  | 0 (0)    | 0 (0)      | 108 (22.5) |
|  |            | 0.05         | 0 (0)                                  | 5 (1.0)  | 6 (1.3)    | 128 (26.7) |
|  |            | 0.1          | 0 (0)                                  | 5 (1.0)  | 7 (1.5)    | 154 (32.1) |
|  | Chloroform | 0.0          | 0 (0)                                  | 0 (0)    | 0 (0)      | 0 (0)      |
|  |            | 0.01         | 0 (0)                                  | 0 (0)    | 0 (0)      | 28 (5.8)   |
|  |            | 0.03         | 0 (0)                                  | 0 (0)    | 0 (0)      | 43 (9.0)   |
|  |            | 0.05         | 0 (0)                                  | 0 (0)    | 0 (0)      | 72 (15.0)  |
|  |            | 0.1          | 0 (0)                                  | 0 (0)    | 0 (0)      | 210 (43.8) |
| Bitter kola ( <i>Garcinia kola</i> )       | Ethanol    | 0.0          | 0 (0)                                  | 0 (0)    | 0 (0)      | 0 (0)      |
|  |            | 0.01         | 0 (0)                                  | 0 (0)    | 0 (0)      | 19 (4.0)   |
|  |            | 0.03         | 0 (0)                                  | 0 (0)    | 27 (5.6)   | 101 (21.0) |
|  |            | 0.05         | 0 (0)                                  | 0 (0)    | 32 (6.7)   | 121 (25.2) |
|  |            | 0.1          | 0 (0)                                  | 19 (4.0) | 33 (6.9)   | 135 (28.1) |
|  | Chloroform | 0.0          | 0 (0)                                  | 0 (0)    | 0 (0)      | 0 (0)      |
|  |            | 0.01         | 0 (0)                                  | 0 (0)    | 11 (2.3)   | 83 (17.3)  |
|  |            | 0.03         | 0 (0)                                  | 0 (0)    | 15 (3.1)   | 94 (19.6)  |
|  |            | 0.05         | 0 (0)                                  | 0 (0)    | 22 (4.6)   | 76 (15.8)  |

|   |            |      |       |       |           |            |
|---|------------|------|-------|-------|-----------|------------|
|   |            | 0.1  | 0 (0) | 0 (0) | 19 (4.0)  | 90 (18.8)  |
| Ocimum leaf ( <i>Ocimum gratissimum</i> )     | Ethanol    | 0.0  | 0 (0) | 0 (0) | 0 (0)     | 0 (0)      |
|   |            | 0.01 | 0 (0) | 0 (0) | 0 (0)     | 111 (23.1) |
|   |            | 0.03 | 0 (0) | 0 (0) | 0 (0)     | 175 (36.5) |
|   |            | 0.05 | 0 (0) | 0 (0) | 0 (0)     | 186 (38.5) |
|   |            | 0.1  | 0 (0) | 0 (0) | 0 (0)     | 217 (45.2) |
|   | Chloroform | 0.0  | 0 (0) | 0 (0) | 0 (0)     | 0 (0)      |
|   |            | 0.01 | 0 (0) | 0 (0) | 1 (0.2)   | 43 (9.0)   |
|   |            | 0.03 | 0 (0) | 0 (0) | 2 (0.4)   | 78 (16.3)  |
|   |            | 0.05 | 0 (0) | 0 (0) | 0 (0)     | 54 (11.3)  |
|   |            | 0.1  | 0 (0) | 0 (0) | 2 (0.4)   | 89 (18.5)  |
| Cashew leaf ( <i>Anacardium occidentale</i> ) | Ethanol    | 0.0  | 0 (0) | 0 (0) | 0 (0)     | 0 (0)      |
|   |            | 0.01 | 0 (0) | 0 (0) | 0 (0)     | 2 (0.4)    |
|   |            | 0.03 | 0 (0) | 0 (0) | 16 (3.3)  | 27 (5.6)   |
|   |            | 0.05 | 0 (0) | 0 (0) | 24 (5.0)  | 51 (10.6)  |
|   |            | 0.1  | 0 (0) | 0 (0) | 72 (15.0) | 181 (37.7) |
|   | Chloroform | 0.0  | 0 (0) | 0 (0) | 0 (0)     | 0 (0)      |
|   |            | 0.01 | 0 (0) | 0 (0) | 0 (0)     | 14 (2.9)   |
|   |            | 0.03 | 0 (0) | 0 (0) | 0 (0)     | 20 (4.2)   |
|   |            | 0.05 | 0 (0) | 0 (0) | 17 (3.5)  | 37 (7.7)   |
|   |            | 0.1  | 0 (0) | 0 (0) | 59 (12.3) | 59 (27.7)  |

**Table 3:** Estimated lethal concentrations of different botanicals for theronts at 24 hours

| Extract                                    | Solvent    | LCs | Estimated concentration (g/ml) at exposure duration |                         |                         |
|--|------------|-----|---|-------------------------|-------------------------|
|  |            |     | 6 h   | 12 h                    | 24 h                    |
| Bitter leaf ( <i>Vernonia amygdalina</i> ) | Ethanol    | 25  | -   | -                       | 0.043 (0.007 – 0.253)   |
|  |            | 50  | -   | -                       | 0.137 (0.006 – 3.434)   |
|  |            | 75  | -   | -                       | 0.441 (0.001 – 138.28)  |
|  |            | 99  | -   | -                       | 7.768 (0 – 1897000)     |
|  | Chloroform | 25  | -   | -                       | 0.048 (0.007 – 0.316)   |
|  |            | 50  | -   | -                       | 0.157 (0.004 – 6.099)   |
|  |            | 75  | -   | -                       | 0.511 (0.0009 – 304.56) |
|  |            | 99  | -   | -                       | 9.204 (0 – 6778221)     |
| Lemon grass ( <i>Cymbopogon citratus</i> ) | Ethanol    | 25  | -   | -                       | 0.078 (0.030 – 0.198)   |
|  |            | 50  | -   | -                       | 0.185 (0.031 – 1.103)   |
|  |            | 75  | -   | -                       | 0.442 (0.026 – 7.527)   |
|  |            | 99  | -   | -                       | 3.730 (0.015 – 952.07)  |
|  | Chloroform | 25  | -   | -                       | 0.060 (0.021 – 0.172)   |
|  |            | 50  | -   | -                       | 0.162 (0.022 – 1.20)    |
|  |            | 75  | -   | -                       | 0.439 (0.016 – 12.250)  |
|  |            | 99  | -   | -                       | 5.021 (0.006 – 4417.43) |
| Bitter kola ( <i>Garcinia kola</i> )       | Ethanol    | 25  | -   | 0.223 (0.01 – 6.99)     | 0.084 (0.03 – 0.239)    |
|  |            | 50  | -   | 1.022 (0.004 – 120.83)  | 0.187 (0.026 – 1.321)   |
|  |            | 75  | -   | 4.302 (0.001 – 2183.78) | 0.415 (0.019 – 8.886)   |
|  |            | 99  | -   | 132.615 (0.0001 – *)    | 2.942 (0.008 – 1086.4)  |
|  | Chloroform | 25  | -   | -                       | 0.117 (0.0036 – 3.818)  |

|   |            |    |   |   |                          |
|---|------------|----|---|---|--------------------------|
|   |            | 50 | - | - | 0.568 (0.003 – 1136.14)  |
|   |            | 75 | - | - | 2.758 (0 - *)            |
|   |            | 99 | - | - | 132.58 (0 - *)           |
| Ocimum leaf ( <i>Ocimum gratissimum</i> )     | Ethanol    | 25 | - | - | 0.011 (0.007 – 0.015)    |
|   |            | 50 | - | - | 0.145 (0.102 – 0.254)    |
|   |            | 75 | - | - | 3.611 (1.341 – 19.849)   |
|   |            | 99 | - | - | 1058.2 (119.3 – 46424.9) |
|   | Chloroform | 25 | - | - | 0.1896 (0.003 – 11.009)  |
|   |            | 50 | - | - | 0.8694 (0.0004 – 2147.8) |
|   |            | 75 | - | - | 3.988 (0 – 491093)       |
|   |            | 99 | - | - | 0 - *)                   |
| cashew leaf ( <i>Anacardium occidentale</i> ) | Ethanol    | 25 | - | - | 0.180 (0.049 – 0.653)    |
|   |            | 50 | - | - | 0.387 (0.045 – 3.33)     |
|   |            | 75 | - | - | 0.835 (0.04 – 17.55)     |
|   |            | 99 | - | - | 5.50 (0.028 – 1068.6)    |
|   | Chloroform | 25 | - | - | 0.364 (0.225 – 0.896)    |
|   |            | 50 | - | - | 1.250 (0.581 – 5.43)     |
|   |            | 75 | - | - | 4.292 (1.487 – 33.148)   |
|   |            | 99 | - | - | 88.35 (14.79 – 2815.09)  |

\*values over 2 000 000.

### STATISTICAL ANALYSIS

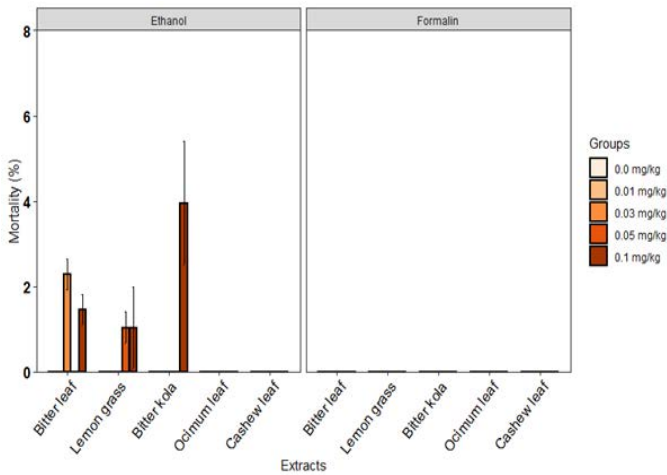
Lethal concentration of the extracts against theronts of *Ichthyophthirius multifiliis* were computed using probit analysis. Theronts mortality (as count) was subjected to negative binomial regression with exposure duration, extract type, extraction solvent and extract concentration as fixed factors and mortality as dependent variable. This was followed by analysis of deviance. Data was analysed in R version 4.0.5 (R Core Team, 2021).

### RESULTS

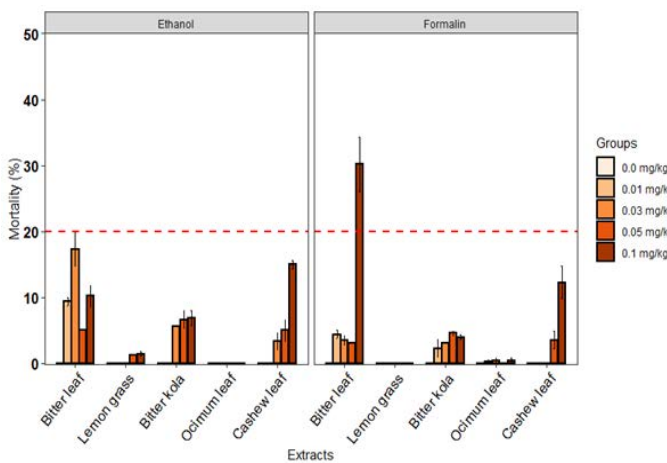
Cumulative mortality of theronts of *Ichthyophthirius multifiliis* on exposure to different plant extracts is summarized in Table 2. Mortality of theronts was dependent on duration of exposure; it increased with prolongation of exposure. Greater number of mortality occurred at 24 h compared to 12 h and 6 h. No mortality occurred at 0 h. Mortality occurred in all five extract types, bitter leaf, lemon grass, bitter kola, ocimum leaf and cashew leaf, and none occurred in the control for the exposure duration. 24-h theront mortality was highest in bitter leaf extracts and least in cashew leaf extract. Mortality was also dependent on extract concentration and extraction solvent. The two highest mortalities of 54.2% and 53.1% occurred at 0.1 g/ml ethanol and chloroform extracts of bitter leaf, respectively on 24-h exposure duration. The least 24-h theront mortality occurred at 0.01 g/ml cashew leaf extract. No mortality occurred within 6-h of exposure in ocimum leaf and cashew leaf treatment media.

From the negative binomial model, duration of exposure significantly affected mortality. A unit increase in mortality at 6-h of exposure was associated with a log count of mortality of 2.793 and 4.475, respectively at 12-h and 24-h, both being significant ( $p < 0.0001$ ). Mortality increased on prolonged exposure. The effect of duration of exposure on infective theront mortality resulting from the extracts was significant (Likelihood ratio [LR]  $\chi^2 = 973.95$ ,  $p < 0.0001$ ). In 6-h, mortality was below 5% for each extract. No mortality occurred in chloroform extract at the 6-h duration. In ethanol extract, mortality occurred only in bitter leaf (0.05 and 0.1 g/ml), lemon grass (0.05 and 0.1 g/ml) and bitter kola (0.1 g/ml) (Figure 3). Extraction solvent affected mortality. The likelihood of a notable impact of exposure duration on infective theront mortality was least when compared to the other parameters investigated (i.e. extract type, exposure duration, and extract concentration), but it was however, significant ( $\chi^2 = 27.69$ ,  $p < 0.0001$ ). Extract prepared from chloroform was less effective compared to ethanol solvent extracts.

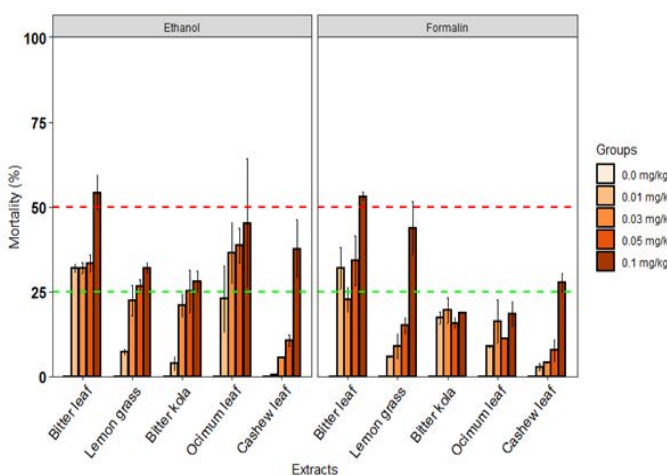
On 12-h exposure duration (Figure 4), the highest mortality occurred at 0.1 g/ml chloroform extracted bitter leaf extract (~ 30%). Mortality in all other extract in 12-h was below 20% (red broken line cut-off). Mortality of theronts by 0.03, 0.05 and 0.1 g/ml of bitter leaf, bitter kola and cashew leaf were usually significantly high compared to the control (Figure 2).



**Figure 3:** Mortality (%) of theronts in concentration of different plant extracts and extraction solvents at 6-h exposure duration.



**Figure 4:** Mortality (%) of theronts in concentration of different plant extracts and extraction solvents at 12-h exposure duration.



**Figure 5:** Mortality (%) of theronts in concentration of different plant extracts and extraction solvents at 24-h exposure duration.

At the end of 24-h exposure period, only 0.1 g/ml bitter leaf

ethanol and chloroform extracts caused over 50% mortality of theronts (red dashed line cut-off). However, over 80% of the highest concentration of the extracts caused over 25% mortality in 24-h (Figure 5). Chloroform extracts of bitter kola and ocimum leaf were below 25% even at 0.1 g/ml on 24-h exposure. Bitter leaf ethanol and chloroform extracts performed better than other extracts as treatment for theront infection in fish *Clarias gariepinus*.

### ESTIMATED LETHAL CONCENTRATIONS OF DIFFERENT BOTANICALS FOR INFECTIVE THERONTS

Lethal concentration estimates for the extracts were only possible for the 24-h exposure duration due to relatively low level mortality at other time intervals. The  $LC_{25}$ ,  $LC_{50}$ ,  $LC_{75}$  and  $LC_{99}$  of the extracts were presented in Table 3. The estimated median lethal concentration ( $LC_{50}$ ) of bitter leaf ethanol and chloroform extracts were 0.137 g/ml (0.006 – 3.434) and 0.157 (0.004 – 6.099), respectively. The 95% confidence interval of the estimate overlapped with  $LC_{50}$  estimates of the other for extracts, namely; lemon grass, bitter kola, ocimum leaf, and cashew leaf.

### DISCUSSION

Efforts towards identifying suitable, economical, residual-free plant-derived compounds, as a better replacement of chemical strategies for the effective control of *I. multifiliis* has been increased at the recent times (Ikele et al., 2020). There is still paucity of literature on the efficacy of cashew leaf, *ocimum* leaf, bitter leaf, lemon grass and bitter kola leaf as a potential parasiticide in controlling theronts. Results of previous studies evaluating plant extracts for their anti-ich efficacy have suggested that crude extracts from some plant have compounds with significant effect against *I. multifiliis* (Buchmann et al., 2003, Yao et al., 2010, Zhang et al., 2013).

The exposure duration for killing theronts was adopted for evaluating a potential parasiticide and was used to evaluate anti-ich efficacy in the current study. Antiprotozoal activity screening of ethanolic and formalin extract of lemon grass, bitter leaf, scent leaf, bitter kola leaf and cashew leaf exhibited a good activity against *I. multifiliis* theronts within 24 hours exposure.

Ling et al. (2013) reported high efficacy of 1.25mg/l methanol extract of *Psoralea Corylifolia* in eradicating 100% infective theronts within 4h of exposure. Camacho et al (2010) reported short exposure to high dose of bronopol (20, 50 and 100mg/l) appeared to have marked effect on the survival of tormont, cysts, and theront stages of *I. multifiliis*.

Yi et al. (2012) reported that methanol extract of *Mag-*

*nolia officinalis* and *Sophora alopecuroides* displayed a high antiprotozoal activity against theronts within 4h and LC<sub>50</sub> values estimated to be 2.45 and 3.43mg/l. There is little information available about the plants used in our study for the control of theronts. But further reports on the efficacy of herbal extract in controlling/eradicating the *I. multifiliis* infective stage theronts has been reported by (Zhang et al., 2013; Ikele et al., 2020). Likewise, Ekanem et al. (2004) reported eradication of ich parasite with 200mg/l *Mucus Pruriens* within 96 hours. There is concerted effort to utilize environmental friendly botanicals as a replacement agent against chemotherapeutics in controlling Infective stage theront Infection.

Test was conducted to evaluate the activities of ethanol and chloroform extract of these plant materials mentioned above against *I. multifiliis* theront. The results showed that theront susceptibility is dependent on the duration length of exposure, concentration and extract solvent. Similar results were also reported in previous studies; for example, garlic extract killed theronts at 62.5 mg l<sup>-1</sup> within 15 h and (Buchmann et al., 2003). Pentagalloylglucose caused 100% mortality of theronts at 2.5mg l<sup>-1</sup> in 4hrs exposure (Zhang et al., 2013).

## CONCLUSION

*Ichthyophthirius multifiliis* is a ciliate parasitic protozoa, commonly encountered in most cultured freshwater fish species. The infective stage theronts is the most difficult to control, due to its' survival rate, and quick penetration to the basal layer of the fish skin within few minutes. Our present findings offered a range of treatment method options for use in commercial farms systems not only for the control of Ich infestations but also other fresh water and marine protozoan's diseases. There is need for proper licensing of environmental friendly non-chemotherapeutics to control parasite infection in food fish farms. In addition, the most effective management strategy to use against Ich, however, may be site/farm specific and require a combination of the different treatments considered in the current study. Plant materials used in the current study has the potential of controlling the free living infective stage parasite, theronts within a short interval.

## ACKNOWLEDGEMENTS

We acknowledge the Department of Plant Science and Biotechnology, Pathology Laboratory, University of Nigeria, Nsukka for providing laboratory work space for the phytochemical analysis.

## CONFLICT OF INTEREST

No conflict of interest among the authors

## NOVELTY STATEMENT

The research work currently evaluated potential of botanicals against *I. multifiliis*. *O. gratissimum* has seldomly be used to control protozoa ich parasite.

## AUTHORS CONTRIBUTIONS

Ikele, Chika Bright: designed the experiment, supervised the research and proof read the manuscript. Ikele, Chio-ma Faith: conducted the phytochemical screenings of the plant material. Uju Venita: conducted the experiment under supervision.

## REFERENCES

- Adeboyejo AO, Clarke EO, Hamed AM, Adaramoye RO (2018). Haematological and hepatic responses of the African catfish, *Clarias gariepinus* to sublethal exposure of industrial effluents from Ologe Lagoon Environs, Lagos, Nigeria. *J. Food Sci. Engr*, 8: 198 - 209
- Ahmed GU, Ferdous MJ, Hossain MS (2009). Disease occurrence and histopathology of catfish and snakehead in oxbow lake fisheries of Bangladesh. *J. Subtrop. Agric. Res. Dev.* 7(3): 638 - 644.
- Ahmed GU, Dhar M, Khan MN, Choi JS (2007). Investigation of diseases of Thai Koi, *Anabas testudineus* (BLOCH) from farming conditions in winter. *Korean J. Life Sci.* 17 (10): 1309 - 1314.
- Ajuru MG, Williams LE, and Ajuru G (2017). Qualitative Phytochemical Screening of Some Plants Used in Ethnomedicine in the Niger Delta Region of Nigeria. *J. Food. Nutri. Sci.* 5 (5): 198-205.
- Alavinia SJ, Mirzargar SS, Rahmati-Holasoo H, Mousavi SV (2018). The in vitro and in vivo effect of tannic acid on *Ichthyophthirius multifiliis* in zebrafish (*Danio rerio*) to treat ichthyophthiriasis. *J Fish Dis*, 41(12): 1793-1802. <https://doi.org/10.1111/jfd.12886>.
- Balta F, Kayis S, Altinok I (2008). External protozoans parasites in three trout species in the Eastern black sea region of the Turkey: intensity, seasonality and their treatments. *Bull. Euro. Assoc. Fish Pathol*, 28: 157 - 62.
- Buchmann K., J. Bresciani, C. Jappe. (2003). Effects of sodium percarbonate and garlic extract on *Ichthyophthirius multifiliis* theronts and tomocysts: In vitro experiments. *North American J. Aquacult.* 65: 21-4. [https://doi.org/10.1577/15488454\(2003\)065<0021:EOSPAG>2.0.CO;2](https://doi.org/10.1577/15488454(2003)065<0021:EOSPAG>2.0.CO;2)
- Camacho P, Taylor NGH, Bron, JE, Guo FC, Shinn AP (2010). Effects of long duration low dose bronopol exposure on the control of *Ichthyophthirius multifiliis* (Ciliophora), Parasitising rainbow trout (*Onchomyxus mykiss* Walbaum). *Vet. Parasitol.* 186: 237 - 244. <https://doi.org/10.1016/j.vetpar.2011.11.022>

- Das BK Mukherjee SC (2000). Sublethal effect of quinalphos on selected blood parameters of *Labeo rohita* (Ham.) fingerlings. *Asian Fish. Sci.* 13: 225 - 233.
- Davis KB, Griffin BR, Gray WL (2002). Effect of handling stress on susceptibility of channel catfish *Ictalurus punctatus* to *Ichthyophthirius multifiliis* and channel catfish virus infection. *Aquaculture*, 214: 55 - 66. [https://doi.org/10.1016/S0044-8486\(02\)00362-9](https://doi.org/10.1016/S0044-8486(02)00362-9)
- Ekanem AP, Obiekezie A, Kloas W, Knopf K (2004). Effects of crude extracts of *Mucuna pruriens* (Fabaceae) and *Carica papaya* against the protozoan fish parasites *Ichthyophthirius multifiliis*. *Parasitol. Res.* 92(5): 361 - 366. <https://doi.org/10.1007/s00436-003-1038-8>
- Fafioye OO (2002). Lethal and sub lethal effect of *Parkia biglobosa* and *Raphia vinifera* on some fresh water fauna. Ph.D. Thesis, University of Ibadan, Nigeria.
- FAO. (2017). Fishery and Aquaculture country profile, the federal republic of Nigeria. [ftp://ftp.fao.org/Fi/DOCUMENT/fcp/en/Fi\\_cp\\_NG](ftp://ftp.fao.org/Fi/DOCUMENT/fcp/en/Fi_cp_NG), accessed 3<sup>rd</sup> November, 2020.
- Francis-Floyd R, Reed P (2009). *Ichthyophthirius multifiliis* (white spot) infections in fish. CIR920. Program in Fisheries and Aquatic Sciences, SFRC, Florida Cooperative Extension Service, Institute of Food and Agricultural Sciences, University of Florida, Gainesville, FL. <http://edis.ifas.ufl.edu/FA006> (accessed November 12, 2009)
- Gholipour-Kanani H., Sahandi J., Taheri A. (2012) Influence of garlic (*Allium sativum*) and mother worth (*Matricaria chamomilla*) extract on *Ichthyophthirius multifiliis* parasite treatment in sail fin molly (*Poecilia latipinna*) ornamental fish. *APCBEE Procedia*. 4: 6 - 11. <https://doi.org/10.1016/j.apcb.2012.11.002>
- Hatanaka AN, Umeda S, Yamashita and Hirazawa N (2007). Identification and characterization of a putative agglutination/immobilization antigen on the surface of *Cryptocaryon irritans*. *Parasitology*, 134: 1163 - 1174. <https://doi.org/10.1017/S003118200700265X>
- Hirazawa NT, Goto, Shirasu K (2003). Killing effect of various treatments on the monogenean *Heterobothrium okamotii* eggs and oncomiracidia and the ciliate *Cryptocaryon irritans* cysts and theronts. *J. Aquacult.*, 223: 1 - 13. DOI:10.1007/s00436-008-0904-9
- Iguchi KK, Ogawa M, Ito F (2003). The influence of rearing density on stress response and disease susceptibility of ayu (*Plecoglossus altivelis*). *Aquaculture*, 220: 515-523. [https://doi.org/10.1016/S0044-8486\(02\)00626-9](https://doi.org/10.1016/S0044-8486(02)00626-9)
- Ji-Hong W., W. Yan-Li, L. Yu-Hua., Z. Ji-Yuan and L. Ze-Hong. (2017). Activity of two extracts of *Cynanchum paniculatum* against *Ichthyophthirius multifiliis* theronts and tomonts. *Parasitology*. 144: 179-185. <https://doi.org/10.1017/S003118201600144X>.
- Ikele BC, Okpasuo JO, Ikele FC, Ating E, Obiezue RN, Mgbenka BO (2020). Antiparasitidal potential of Aqueous leaf extract of *Ichthyophthirius multifiliis* infestation on *Clarias gariepinus*. *J. Animal Health and Production*. 8(3): 113 - 121. | <http://dx.doi.org/10.17582/journal.jahp/2020/8.3.113.121>
- Ling F, Wang JG, Wang GX, Gong XN (2011). Effect of potassium ferrate (VI) on survival and reproduction of *Ichthyophthirius multifiliis* tomonts. *Parasitol. Res.* 109: 1423-1428. <https://doi.org/10.1007/s00436-011-2389-1>
- Ling F, Wang JG, Liu QF, Li M, Ye LT, Gong XN (2010) Prevention of *Ichthyophthirius multifiliis* *Ichthyophthirius multifiliis* infestation in goldfish (*Carassius auratus*) by potassium ferrate(VI) treatment. *Veter. Parasitol*, 168: 212 - 216. <https://doi.org/10.1016/j.vetpar.2009.11.009>
- Ling F, Wang JG, Lu C, Wang GX, Lui YH, Gong XN (2012). Effects of aqueous extract of *Capsicum frutescens* (Solanaceae) against the fish ectoparasite *Ichthyophthirius multifiliis*. *Parasitol. Res.* 111: 841 - 848. <https://doi.org/10.1007/s00436-013-3397-0>
- Ling F, Wang JG, Wang, G. X., Gong, X. N. (2011). Effect of potassium ferrate(VI) on survival and reproduction of tomonts. *Parasitol. Res.* 109: 1423 - 1428. <https://doi.org/10.1007/s00436-011-2389-1>.
- Ling F., C. Lu, X. Tu, Y. Yi, A. Huang, Q. Zhang, G. Wang, (2013). Antiprotozoal screening of traditional medicinal plants: evaluation of crude extract of *Psoralea corylifolia* against *Ichthyophthirius multifiliis* in goldfish. *Parasitology Research* 112(6): 2331 - 2340. <https://doi.org/10.1007/s00436-013-3397-0>.
- Lu C, Zhang HY, Ji, J, Wang GX (2012). In vivo anthelmintic activity of *Dryopteris crassirhizoma*, *Kochia scoparia*, and *Polygala tenuifolia* against *Dactylogyrus imterme-dius* (Monogenea) in goldfish (*Carassius auratus*). *Parasitol. Res.* 110: 1085 - 1090. <https://doi.org/10.1007/s00436-011-2592-0>.
- Lusiastuti M, Tauhid T, Anggi I, Caruso D (2017). Dry green leaves of Indian almond (*Terminalia catappa*) to prevent streptococcal infection in juvenile of the Nile Tilapia (*Oreochromis niloticus*). *Bull. Euro. Assoc. Fish. Pathol.*, 37: 119 - 25.
- Matthews RA (2005) *Ichthyophthirius multifiliis* Fouquet and *ichthyophthiriosis* in freshwater teleosts. *Adv. Parasitol.* 59: 159 - 241. [https://doi.org/10.1016/S0065-308X\(05\)59003-1](https://doi.org/10.1016/S0065-308X(05)59003-1).
- Miron DS, Silva LVF, Golombieski JI, Baldissarroto B (2003). Efficacy of different salt (NaCl) concentrations in the treatment of *Ichthyophthirius multifiliis*-infected silver catfish, *Rhamdia quelen*, fingerlings. *J. Applied Aqua.* 14: 155 - 161. [https://doi.org/10.1300/J028v14n01\\_12](https://doi.org/10.1300/J028v14n01_12)
- Martins ML, XU DH, Shoemaker CA, Klesius PH (2011). Temperature effects on immune response and hematological parameters of channel catfish *Ictalurus punctatus* vaccinated with live theronts of *Ichthyophthirius multifiliis*. *Fish Shellfish Immunol.*, 31: 774 - 780. <https://doi.org/10.1016/j.fsi.2011.07.015>.
- Noga EJ (2010). *Fish Disease: Diagnosis and Treatment*. Wiley-Blackwell
- Onwuka GI (2005). *Food Analysis: Theory and Practice*. Naphthali Prints, Lagos, Nigeria, pp: 133-134, 144-199.
- Patnaik L, Patra AK (2006). Haematopoietic alterations induced by carbaryl in *Clarias batrachus* (Linn.). *J. Appl. Sci. Environ. Man.* 10: 5 - 7.
- R Core Team. (2021). R: A language and environment for statistical computing. R Foundation for Statistical Computing, Vienna, Austria. URL <https://www.R-project.org/>.
- Railo EM, Nikinmaa, Soivio A (1999). Effects of sampling on blood parameters in the rainbow trout, *Salmo gairdneri* Richardson. *J. Fish Bio.* 26: 725 - 732.
- Samprath KS, Velamnia IJ, James R (1993). Haematological changes and their recovery in *Oreochromis mossambicus* as a function of exposure period and sublethal levels of *Ekalux*. *Acta. Hydrobiology*, 35: 73 - 83
- Shinn AP, Taylor NGH, and Wooten R (2005). Development of a management system for the control of *Ichthyophthirius multifiliis*. *Trout News*. 40:21 - 5
- Straus DL, Griffin BR. (2002). Prevention of an Initial Infesta-



- tion of *Ichthyophthirius multifiliis* in Channel Catfish and Blue Tilapia by Potassium Permanganate Treatment. North Am. J. Aqua. 63:11–16. [https://doi.org/10.1577/15488454\(2001\)063%3C0011:POAIIO%3E2.0.CO;2](https://doi.org/10.1577/15488454(2001)063%3C0011:POAIIO%3E2.0.CO;2)
- Tieman DM, Godwin AE (2001). Treatments for ich infestations in channel catfish evaluated under static and flow-through water conditions. North. Am. J. Aqua., 63: 293-299. [https://doi.org/10.1577/1548-84454\(2001\)063<0293:TFIIC>2.0.CO;2](https://doi.org/10.1577/1548-84454(2001)063<0293:TFIIC>2.0.CO;2)
- Toksen E, and Nemli E (2010). Oral treatment trials on telescope fish (*Carassius auratus*) experimentally infected with *Ichthyophthirius multifiliis* (Fouquet, 1876). Bull. Euro. Assoc. Fish Pathol., 30: 48 - 2.
- Xiao-feng S, Qing-feng M, Yuan-huan K, Yu B, Yun-hang G, Wei-li W, Ai-dong Q (2014). Isolation of active compounds from methanol extracts of *Toddalia asiatica* against *Ichthyophthirius multifiliis* in goldfish (*Carassius auratus*). Vet. Parasitol. 199: 250 - 254.
- Yao JY, Shen JY, Li XL, Xu Y (2010). Effect of sanguinarine from the leaves of *Macleaya cordata* against *Ichthyophthirius multifiliis* in grass carp (*Ctenopharyngodon idella*). Parasitol. Res. 107: 1035 - 1042. <https://doi.org/10.1007/s00436-010-1966-z>.
- Yao J.Y., J.Y. Shen, X.L. Li, Y. Xu, G.J. Hao, X.Y. Pan, G.X. Wang, W.L. Yin. 2010. Effect of sanguinarine from the leaves of *Macleaya cordata* against *Ichthyophthirius multifiliis* in grass carp (*Ctenopharyngodon idella*). Parasitol. Res. 107(5): 1035–1042. <https://doi.org/10.1007/s00436-010-1966-z>
- Yao JY, Zhou ZM, Li XL, Yin WL (2011). Anti-parasitic efficacy of dihydrosanguinarine and dihydro-chelerythrine from *Macleaya microcarpa* against *Ichthyophthirius multifiliis* in richadsin (*Squaliobarbus curriculus*). Vet. Parasitol. 183: 8 – 13. <https://doi.org/10.1016/j.vetpar.2011.07.021>.
- Yi YL, Lu C, Hu XG, Ling F, Wang GX (2012). Antiprotozoal activity of medicinal plants against *Ichthyophthirius multifiliis* in goldfish (*Carassius auratus*). Parasitol. Res., 111: 1771 – 1778, <https://doi.org/10.1007/s00436-012-3022-7>
- Zhang Q, Xu DH, Klesius PH (2013). Evaluation of an anti-parasitic compound extracted from *Galla chinensis* against fish parasite *Ichthyophthirius multifiliis*. Vet. Parasitol. 198: 45 – 53, <https://doi.org/10.1016/j.vetpar.2013.08.019>
- Zhou S, Liu Y, Zhang Q, Fu Y, and Lin D (2018). Evaluation of an antiparasitic compound extracted from *Polygonum cuspidatum* against *Ichthyophthirius multifiliis* in grass carp. Vet. Parasitol. 253. <https://doi.org/10.1016/j.vetpar.2018.02.005>.