



Supplementary Material

Interferon-stimulated Gene 15 and Interferon-1 Stimulated Gene 17 Messenger RNA-based Detection of Early Pregnancy in Aardi Goats in Saudi Arabia

Kamal Al-Samawi¹, Mohamed Al-Hassan², Hussein Migdadi^{3,4*}, Megahed Ammar⁵ and Salem Alghamdi³

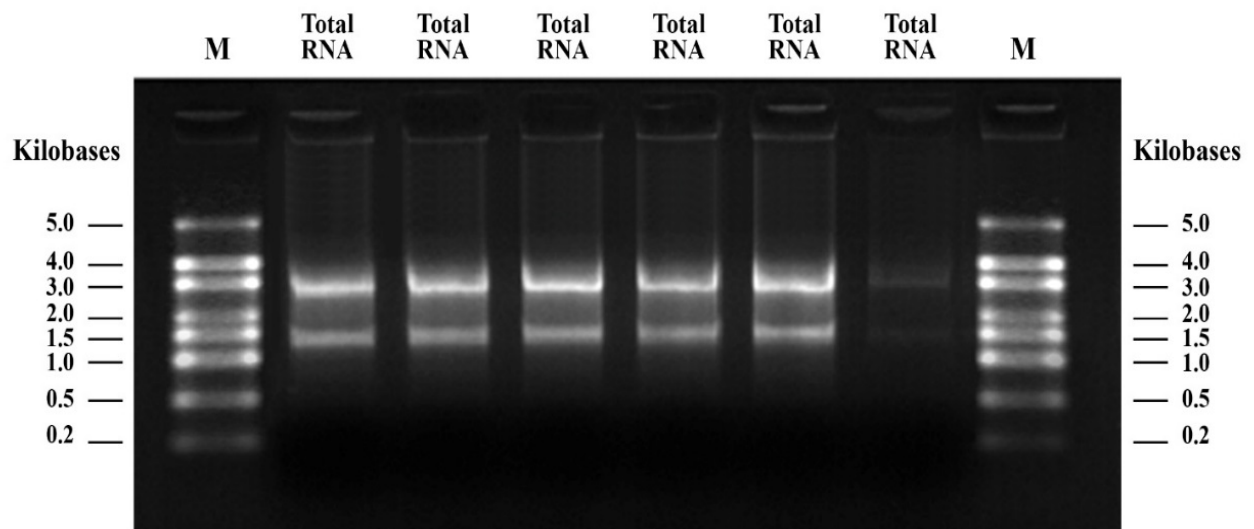
¹Animal Production Department, Faculty of Agricultural Sciences and Veterinary medicine, Tamar University, Yemen Republic

²Animal Production Department, College of Food and Agriculture Sciences, King Saud University, KSA

³Plant Production Department, College of Food and Agriculture Sciences, King Saud University, KSA

⁴National Agricultural Research Center, P.O Box: 639, Baq'a 19381, Jordan

⁵Rice Research and Training Center, Sakha 33717, Kafrelsheikh, Egypt



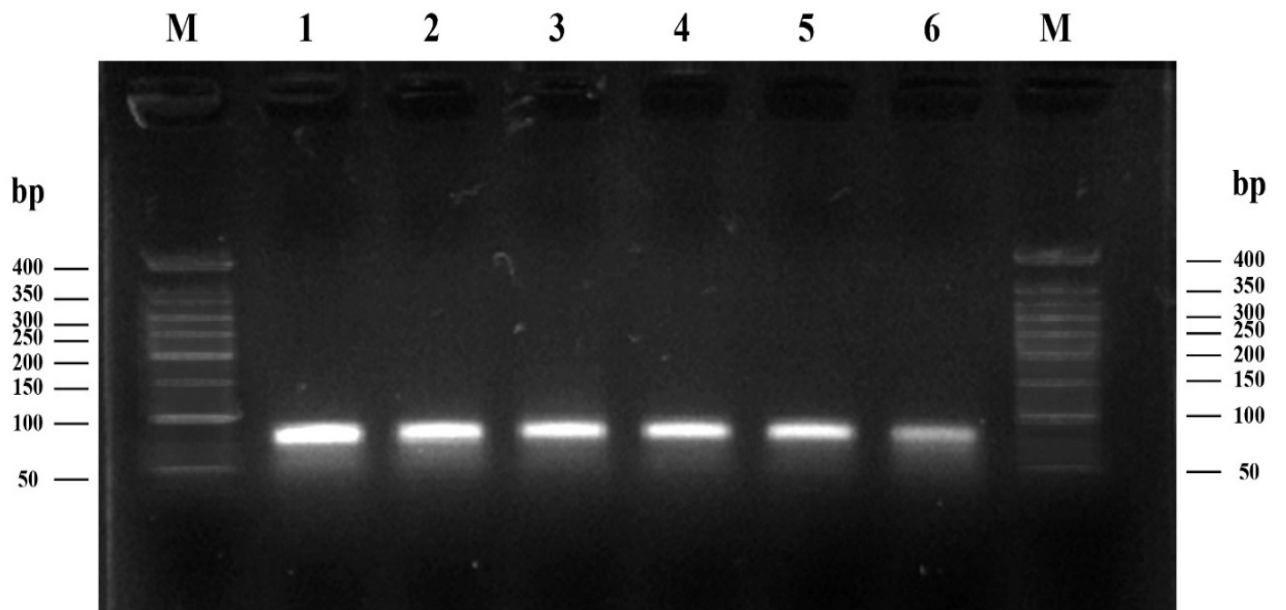
Supplementary Fig. 1. Gel electrophoresis image showing the total RNA extraction, two bands appeared. Extracted total RNA using total RNA Isolation kit (Promega®), 1 kp DNA ladder was used as marker (M) (Quick-load® 1 kp DNA ladder).

* Corresponding author: hmigdadi@ksu.edu.sa;

h.migdadi@gmail.com

0030-9923/2021/0003-1005 \$ 9.00/0

Copyright 2021 Zoological Society of Pakistan



Supplementary Fig. 2. Gel electrophoresis image showing the PCR product was resolved as a single band. 50 bp DNA ladder was used as marker (M) (Quick-load®50 bp DNA ladder), 1,2,3 PCR product for ISG15 and 4,5,6 PCR product for ISG17.