



Supplementary Material

Biofilm Formation and Bacterial Aggregation Response of *Planomicrobium chinense* and *Alkaligenes faecalis* Associated with *Periplaneta americana* Found in Household Sewerage

Uzma Rafi*, Asmat, Muqaddes Niaz, Syeda Shazia Bokhari and Aisha Waheed Qurashi*

Department of Biology, Lahore Garrison University, Sector-C, Av-4, Phase VI, DHA Lahore

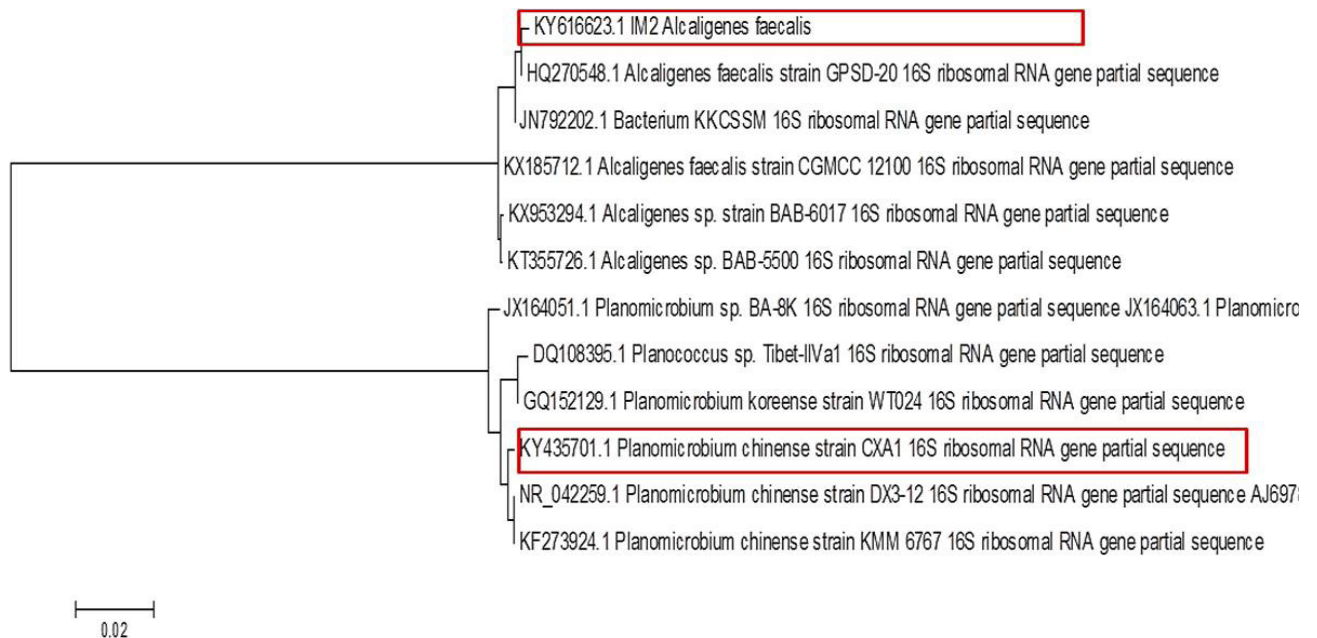
* Corresponding author: aishawaheedqureshi@lgu.edu.pk; uzmazeeshan@lgu.edu.pk

0030-9923/2019/0006-2389 \$ 9.00/0

Copyright 2019 Zoological Society of Pakistan

Supplementary Table I. Morphological and cultural characterization of isolates.

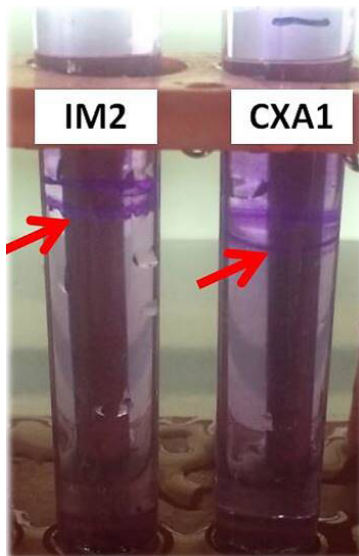
Strains	Culture characteristics					Staining results			
	Appearance	Form	Pigmentation	Margin	Elevation	Simple Staining	Gram staining	Spore staining	Capsule staining
IM2 (<i>Alkaligenes faecalis</i>)	Mucoidy	Circular	Off White	Entire	Flat	Coccus	Gram Positive	Negative	Negative
CXA1 (<i>Planomicrobium chinense</i>)	Mucoidy	Circular	Orange	Pin point	Flat	Rods	Gram Positive	Negative	Negative



Supplementary Fig. 1. Phylogenetic analysis based on 16 S rRNA showing homology to other reference nucleotide sequences was derived using MEGA6 software. The analysis is based on neighbor join method involving 12 nucleotide sequences. For each of the strains Gene Bank accession numbers are provided.

Supplementary Table II. Biochemical characterization of isolates.

Strains	Biofilm ring assay	Starch Hydrolysis	Citrate utilization test	Litmus milk reaction	Methyl red test	Voges-Proskauer test	Catalase test
IM2 (<i>Alkaligenes faecalis</i>)	Positive	Positive	Positive	Acid with Reduction	Positive	Negative	Positive
CXA1 (<i>Planomicrobium chinense</i>)	Positive	Negative	Positive	Acid with Reduction	Negative	Negative	Positive



Supplementary Fig. 2. Biofilm Ring Assay: Crystal violet ring was formed after 144 h of culture incubation.